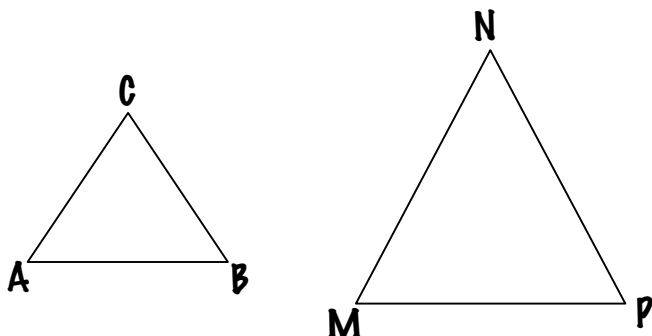


Similarity Homework - Day 1

The figures below are similar. Complete each statement.



Helpful

Hint:

Draw in
the arc
marks.

1) $m\angle A = m\angle$ _____

2) $m\angle B = m\angle$ _____

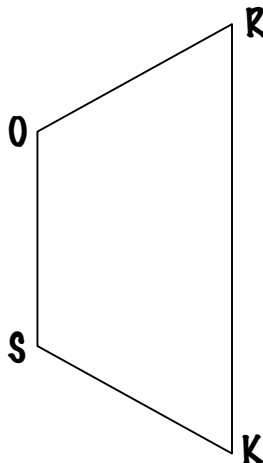
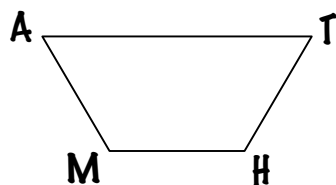
3) $m\angle C = m\angle$ _____

4) $\frac{AB}{MP} = \frac{AC}{?}$

5) $\frac{AC}{MN} = \frac{BC}{?}$

6) $\frac{NP}{?} = \frac{MP}{AB}$

7) Write a similarity statement for the triangles above. _____



8) $m\angle M =$ _____

9) $m\angle A =$ _____

10) $m\angle S =$ _____

11) $m\angle K =$ _____

12) $\frac{AT}{RK} = \frac{TH}{?}$

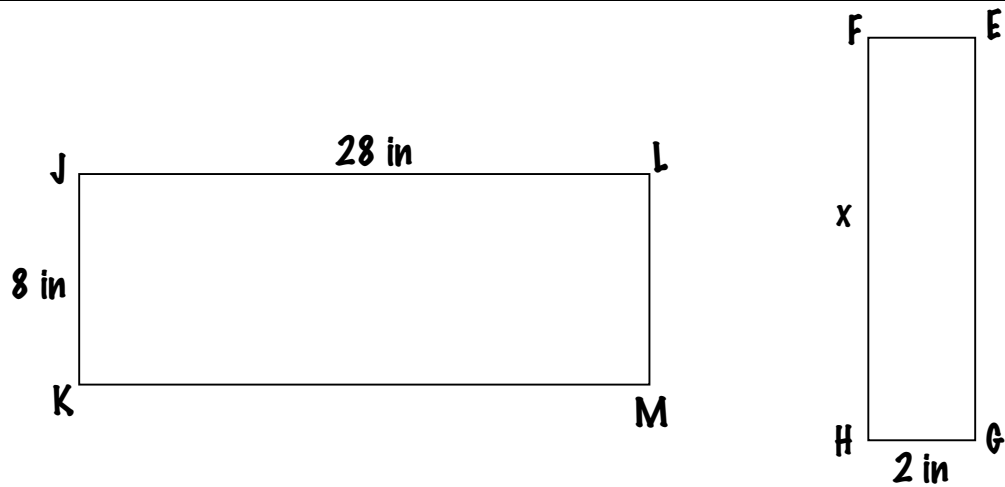
13) $\frac{MH}{OS} = \frac{MA}{?}$

14) $\frac{KS}{?} = \frac{?}{AM}$

15) $\frac{RO}{?} = \frac{?}{AT}$

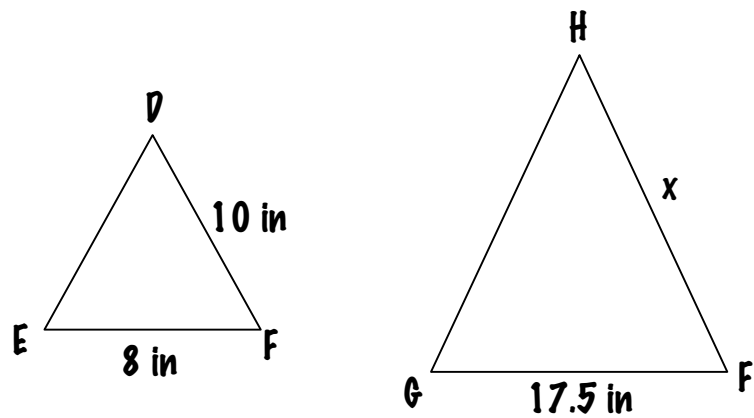
16) Write a similarity statement for the quadrilaterals above. _____

Similarity Homework - Day 2



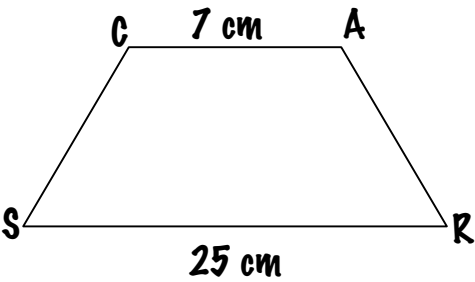
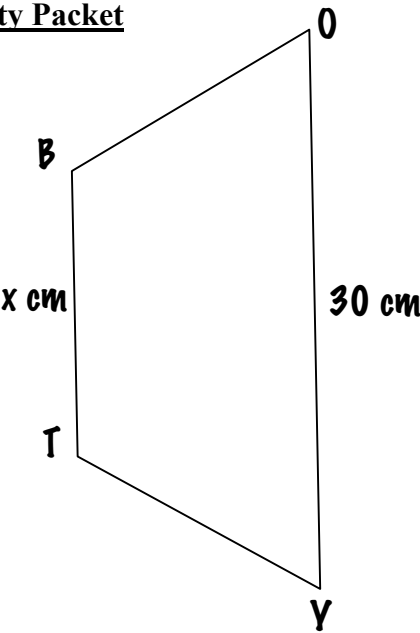
17) Write a similarity statement for the two triangles above. _____

18) Solve for x . $x =$ _____



19) Write a similarity statement for the two triangles above. _____

20) Solve for x . $x =$ _____

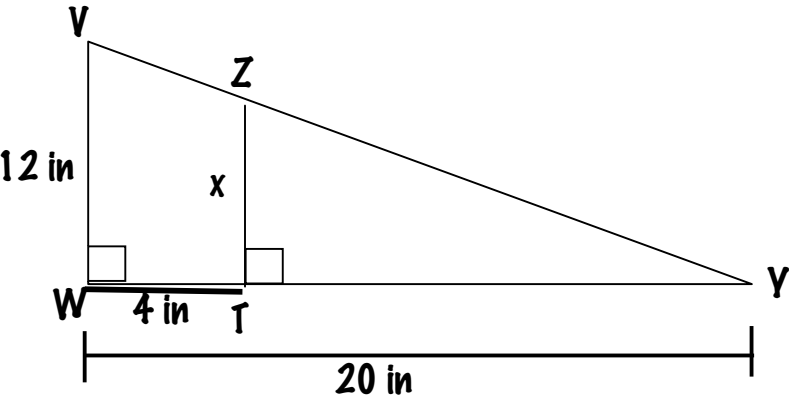


21) Write a similarity statement for the two quadrilaterals above. _____

22) Solve for x. $x =$ _____



Helpful
Hint:
Draw 2
separate
triangles.



23) Write a similarity statement for the two quadrilaterals above. _____

24) Solve for x. $x =$ _____